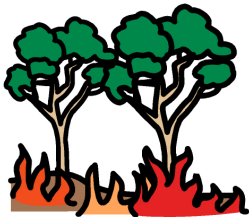
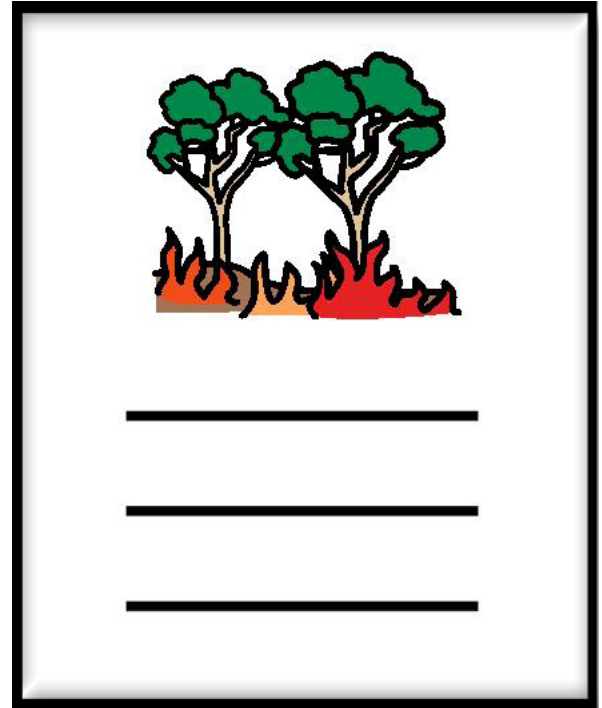
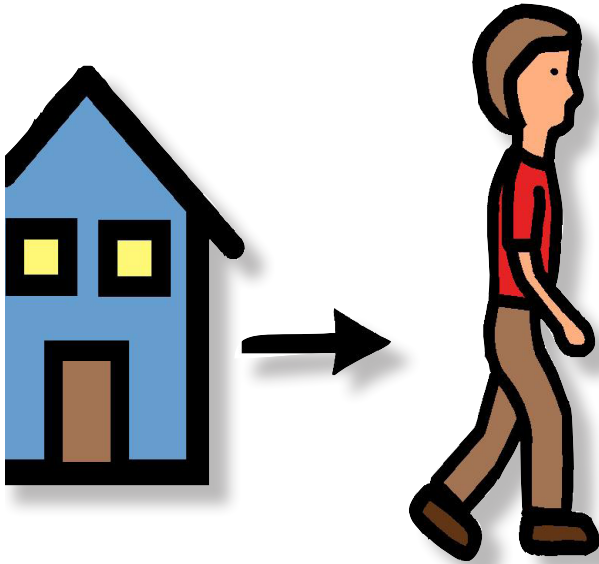
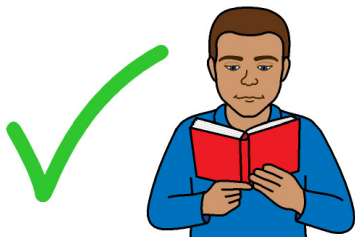


# 11 My Bushfire Plan - Leave early



**Bushfire Safety Guide**



**Easy to read**



**Government of  
South Australia**



## 1 Read the **Information Book** - **Leave early**



## 2 Write your plan to leave early.



Ask a

– friend

**or**

– family member

to help you write your plan.

Write today's date here

-- / -- / --

\_\_\_\_\_



\_\_\_\_\_

Write phone numbers here

Emergency **000** \_\_\_\_\_

Doctor \_\_\_\_\_

School \_\_\_\_\_

Vet \_\_\_\_\_

Bank \_\_\_\_\_

Insurance company \_\_\_\_\_

Policy number \_\_\_\_\_

Water company \_\_\_\_\_

**Electricity company** \_\_\_\_\_

**Gas company** \_\_\_\_\_

**Local council** \_\_\_\_\_

**Family and friends**

Name	Phone number



## **Bushfire Information**

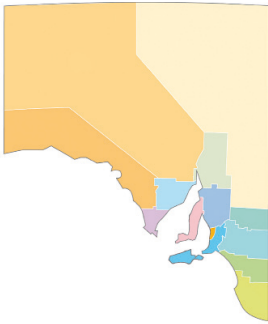
Bushfire Information Hotline 1800 362 361

TTY 133 677

National Relay Service 1300 555 727

**Our local radio station is**

---



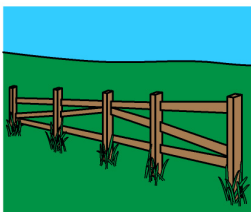
**Our fire ban district is**

---



**Our nearest Safer Place is**

---



**Our Last Resort Refuge is**

---



**Who is going to leave early?**

---

---

---

---



**Who is going to stay and defend?**

Name	Phone number

CATASTROPHIC Total Fire Ban
EXTREME Total Fire Ban
SEVERE Total Fire Ban
VERY HIGH
HIGH
LOW - MODERATE

## What is your sign to start your plan?

Know the Fire Danger Rating.

- Catastrophic is the bright red colour
- Extreme is the light red colour
- Severe is the orange colour
- Very High is the yellow colour

**You will start your Bushfire Plan - Leave early when the Fire Danger Rating is**

---



**Where you will go**

---

---

---

---



**When you will go**

---

---

---

---





## How you will get there

---

---



## What you need to take

---

---

---

---

---



**People you will tell**

---

---

---

---



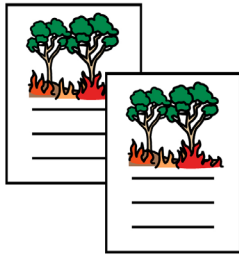
**When you can go back home**

---

---

---

---



## Your back up plan

Your plan may **not** work.

The fire might come too fast.



Where you will go. Your Last Resort Refuge

---

---

---

---



How you will get there

---



**You get stuck at home.**

**What you will do**

---

---

---

---



## More information



Bushfire Information Hotline

Phone 1800 362 361



TTY phone 133 677

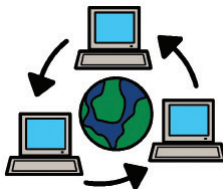
then ask for 1800 362 361



National Relay Service

Phone 1300 555 727

then ask for 1800 362 361



Website [www.cfs.sa.gov.au](http://www.cfs.sa.gov.au)



Go to your local Bushfire Blitz meeting.  
Join or start a Community Fire Safe group for your area.

You can also use social media.



- Facebook  
[www.facebook.com/countryfireservice](https://www.facebook.com/countryfireservice)



- Twitter @CFSTalk

Scope's Communication Resource Centre wrote the Easy English in August 2013. [www.scopevic.org.au](http://www.scopevic.org.au)

To see the original book, contact the Country Fire Service (CFS).

Mayer-Johnson LLC says we can use the Picture Communication Symbols © 1981 – 2013.

Mayer-Johnson LLC says we can use the ThinLine package.  
© 2010 – 2013.

Valuing People

Valuing People ClipArt © Inspired Services, UK.  
[www.inspiredservices.org.uk](http://www.inspiredservices.org.uk)