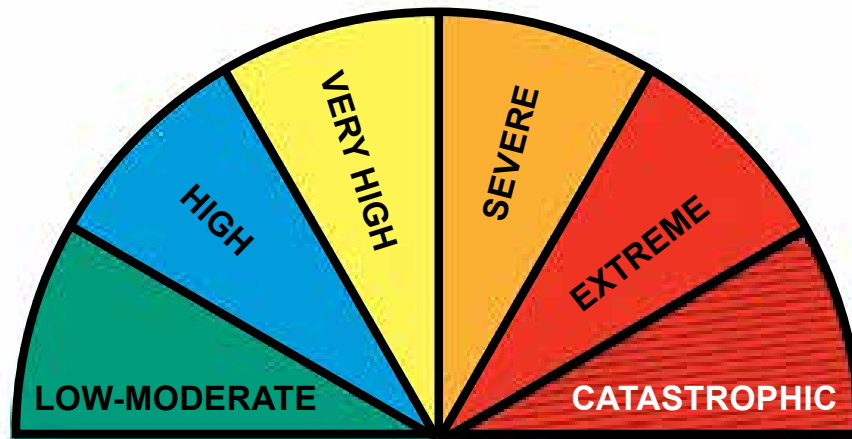


4 Fire Danger Ratings and Warnings



Bushfire Safety Guide



Easy to read



Government of
South Australia



Fire Danger Ratings and what you must do



Fire Danger Ratings say how bad the bushfire will be.

Use the Fire Danger Rating to work out when to start your Bushfire Plan.



Catastrophic Fire Danger Rating

This is the bright red colour.



The weather is

- hot
- dry
- windy.

If a bushfire starts it will be the worst kind of bushfire.



It is a Total Fire Ban day.

Your only safe choice is to leave early.

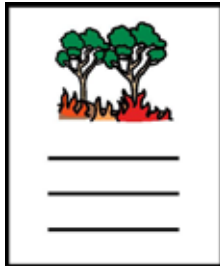
This means leave

- the night before

or

- in the morning.

Houses are **not** made to survive in bushfire.



Do **not** wait for a warning.

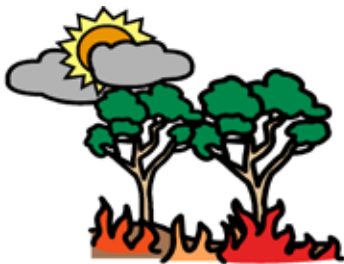
Catastrophic Fire Danger Rating is your sign to start your Bushfire Plan.



Extreme and Severe Fire Danger Rating

These are the

- light red colour
- and
- orange colour.



The weather is

- hot
- dry
- windy.

If a bushfire starts it will be very big.



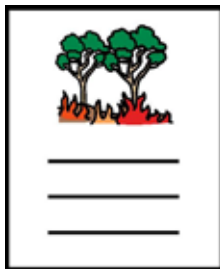
It is a Total Fire Ban day. You should leave early. This means leave

- the night before
- or
- in the morning.



Only stay if

- your house and land are ready
- and**
- you can fight the fire.



Do **not** wait for a warning.

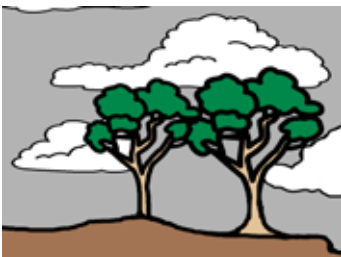
- Extreme
- and**
- Severe Fire Danger Rating is your sign to start your Bushfire Plan.



Very High, High or Low Moderate Fire Danger Rating

These are the

- yellow
- blue
- or**
- green colour.



There could still be a bushfire on these days.



Protect you and your property

Be ready to start your Bushfire Plan.

Do **not** wait to get a warning first. You might **not** get a warning. Fire can come

- quicky
- with **no** warning.



The CFS may **not** come to your property.



You must check for fire

- Look and smell for smoke
- Look and listen for fire
- Talk to your neighbours



Remember your

- power
- home phone
- mobile phone

and

- internet

may **not** work when there is a fire.

There are 3 different warnings.



Advice.

A fire has started. You are **not** in danger now.
This may change. Check your Bushfire Plan.



Watch and Act.

A fire is coming. Things are changing.
Act to protect you and your family.
Start your Bushfire Plan.



Emergency Warning.

You are in danger. The fire will come to you.
Act now. Follow your Bushfire Plan.
You must do what the warning says.



In an emergency

you may get a message on your

- home phone
- mobile phone.

Remember your phone may stop working.

You may **not** get a message.



Bushfire warnings

You **must** check for a bushfire warning on



- your local radio. For example,
 - ABC
 - Fiveaa



- Bushfire Information Hotline
Phone 1800 362 361



- TTY phone 133 677
then ask for 1800 362 361



- National Relay Service
Phone 1300 555 727
then ask for 1800 362 361



- Website www.cfs.sa.gov.au



- Facebook

www.facebook.com/countryfireservice



- Twitter @CFSTalk



More information



- Go to your local Bushfire Blitz meeting.
Join or start a Community Fire Safe group for your area.

Scope's Communication Resource Centre wrote the Easy English in August 2013. www.scopevic.org.au

To see the original book, contact the Country Fire Service (CFS).

Mayer-Johnson LLC says we can use the Picture Communication Symbols © 1981 – 2013.

Mayer-Johnson LLC says we can use the ThinLine package.
© 2010 – 2013.

Valuing People

Valuing People ClipArt © Inspired Services, UK.
www.inspiredservices.org.uk

Revised January 2017