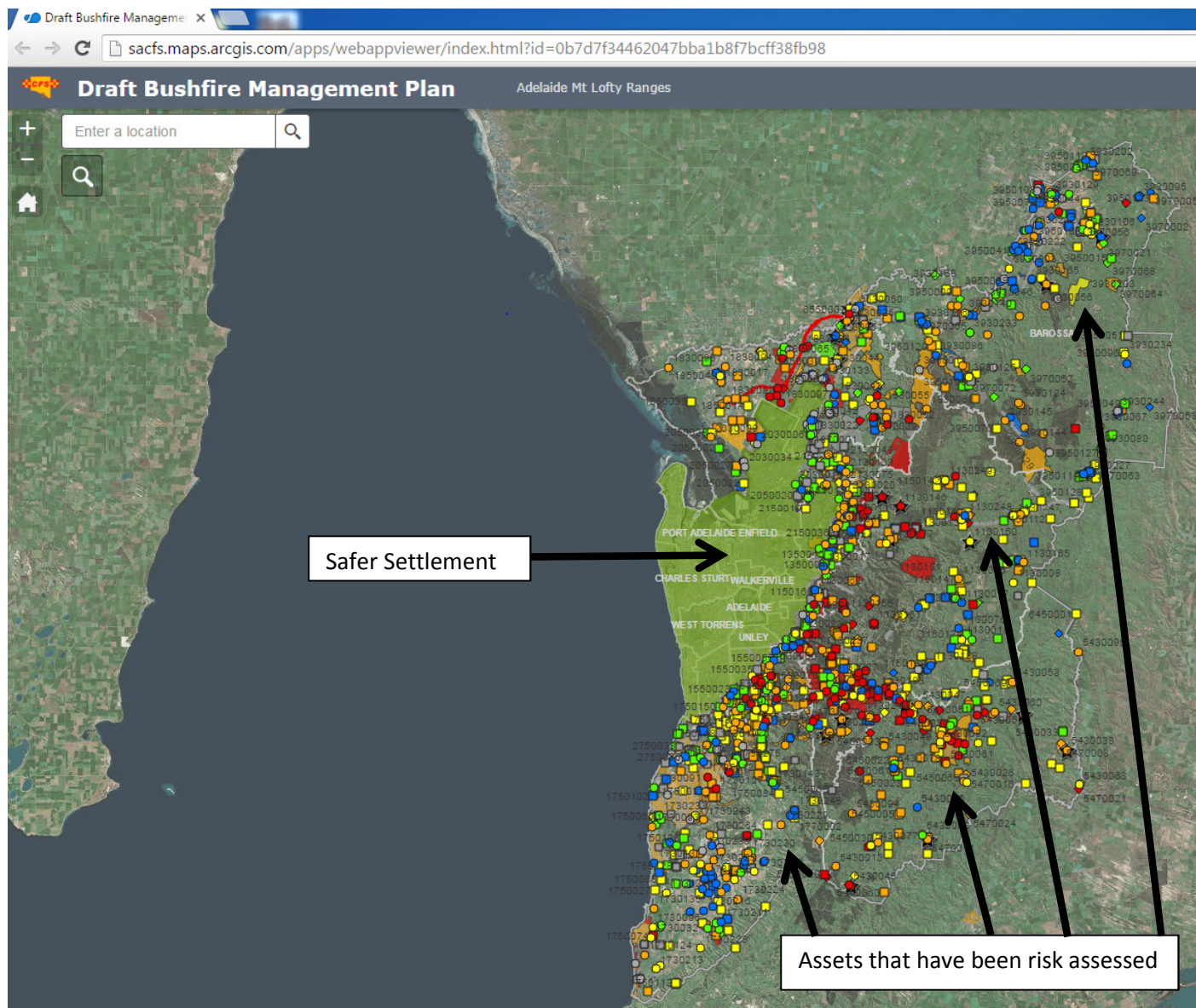


HOW TO INTERPRET THE DRAFT BMAP Map






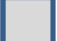
Note: Assets that have not been spatially identified may still be at risk from bushfire, for example individual homes, rural properties and associated structures. All asset owners need to undertake appropriate bushfire prevention and preparedness activities.

A map display page will appear:

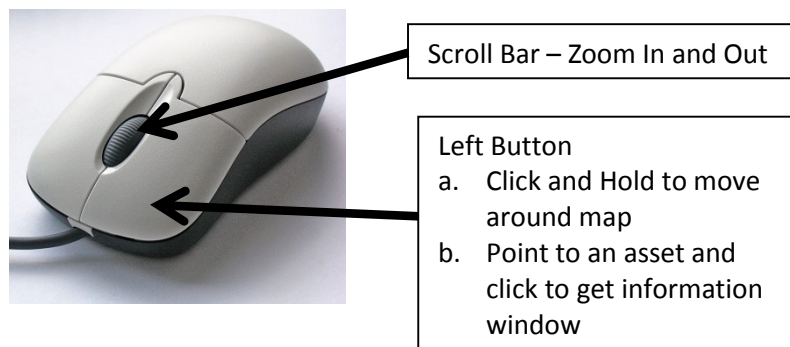


When the link is opened you will see a map of the Bushfire Management Area. The assets that have been risk assessed appear as different coloured points, lines and shapes. Assets within the Bushfire Safer Settlement and Bushfire Safer Precincts have not been included.

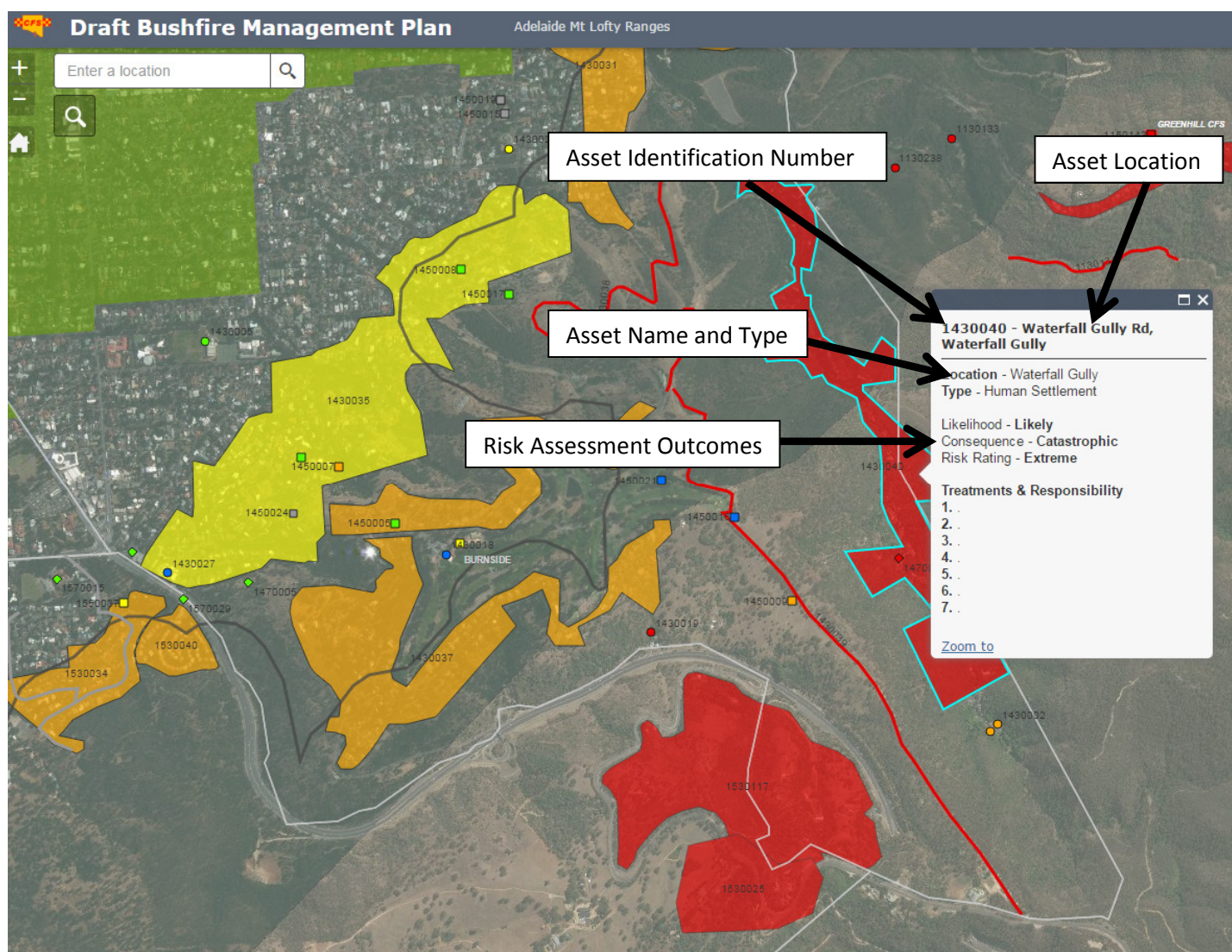
The colours indicate the risk assessment outcome:





-  Extreme
-  Very High
-  High
-  Medium
-  Low
-  N/A – no risk (*some of these assets are still to be assessed*)

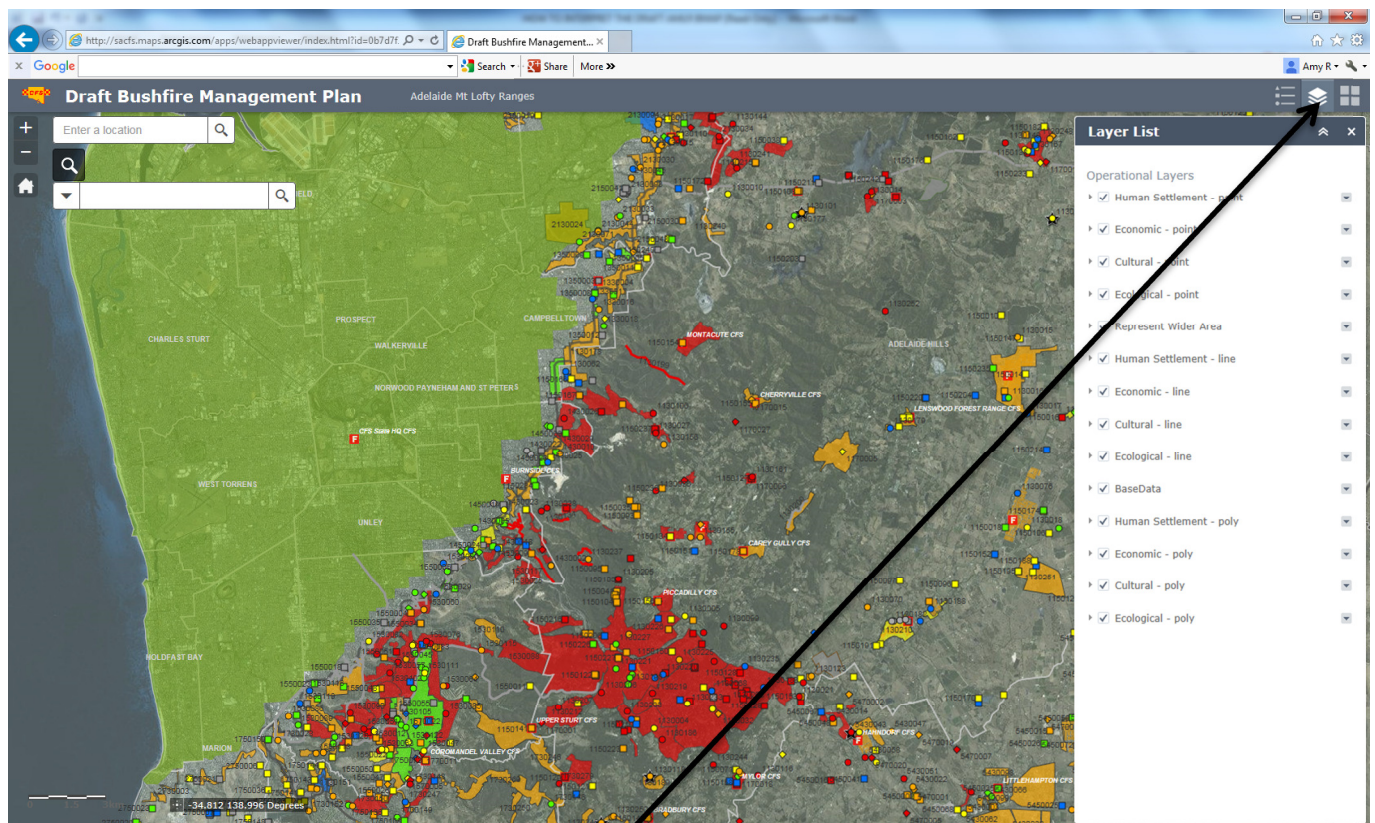
Use your mouse to navigate the map.



Zoom in and click on an Asset. The Information Window will open:



-  Polygon/Shape
Human Settlement – Residential
-  Human Settlement – Special Fire Protection/Other
-  Economic Asset
-  Cultural Heritage Asset



The different classes of assets can be turned on and off by selecting the layer list and either ticking or unticking the box relating to the asset. The BaseData layer contains additional information (CFS stations, Safer Places etc.) that can also be turned on/off.

