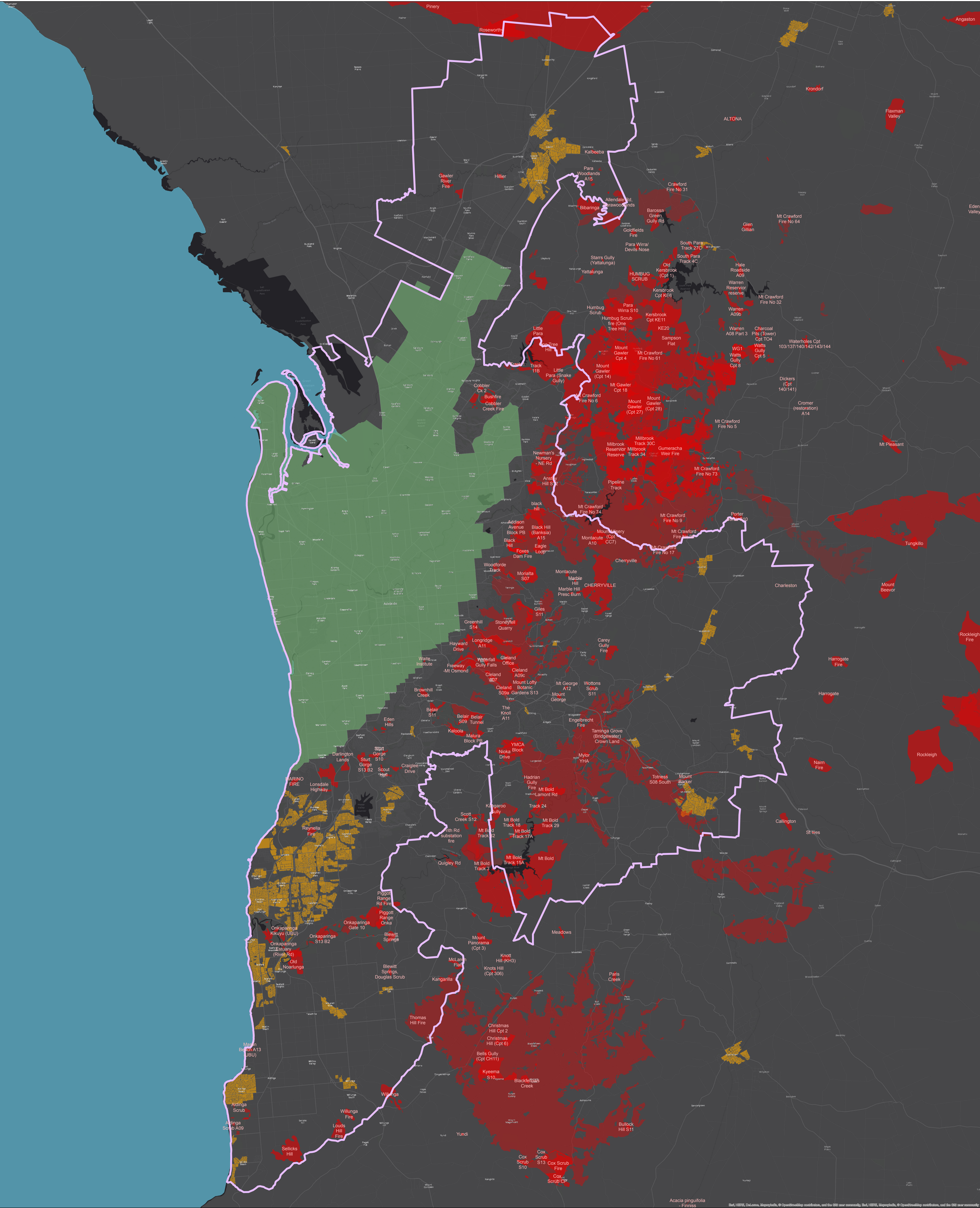




# Fires In the Peri-Urban Area of Greater Adelaide



051020Kilometers

Fire Year

2001 - 2015 (Labelled)

1988 - 2000

1978 - 1987

1966 - 1977

1931 - 1965

Adelaide Bushfire Safer Settlement

Peri-Urban Extent (ABS Significant Urban Areas 2011)

The Significant Urban Area structure of the Australian Statistical Geography Standard represents concentrations of urban development with a population of 10,000 or more using whole Statistical Areas Level 2. They do not necessarily represent a single Urban Centre, as they can represent a cluster of related Urban Centres with a core urban population over 10,000. They can also include related peri-urban and satellite development and the area into which the urban development is likely to expand. (From: www.abs.gov.au)

Bushfire Safer Precincts

Produced by: Bushfire Management Planning South Australian Country Fire Service Level 5, 60 Waymouth Street, Adelaide SA 5000 www.cfs.sa.gov.au

Data Source: SA CFS, DEWNR, ABS, ESRI

Compiled: 8/12/2015

Projection: Transverse Mercator

Datum: GDA94 MGA zone 54

© Copyright South Australian Country Fire Service 2015. All Rights Reserved. All works and information displayed are subject to Copyright. For the reproduction or publication beyond that permitted by the Copyright Act 1968 (Cwth) written permission must be sought from the Service.

Although every effort has been made to ensure the accuracy of the information displayed, the Department, its agents, officers and employees make no representations, either express or implied that the information displayed is accurate or fit for any purpose and expressly disclaims all liability for loss or damage arising from reliance upon the information displayed.

www.cfs.sa.gov.au

ABN 97 677 077 835

Government of  
South Australia